

en Package insert
de Beipackzettel

Climatix™ range
Climatix™ Sortiment

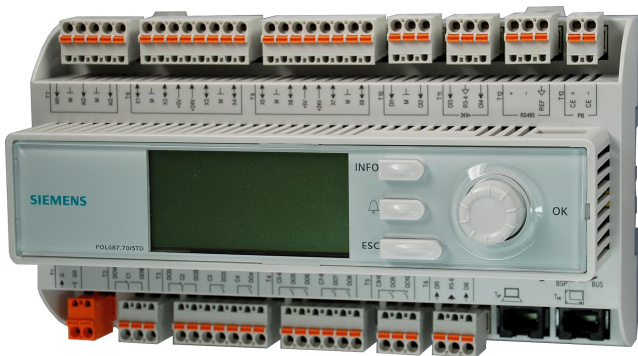
POL 68X.XX/XXX
POL 63X.00/XXX,
POL 925.00/XXX, POL 945.00/XXX
POL 965.00/XXX, POL 985.00/XXX
POL 94U.00/XXX, POL 94E.00/XXX
POL 955.00/XXX,
POL 902.00/XXX, POL 904.00/XXX
POL 906.00/XXX, POL 907.00/XXX
POL 908.00/XXX, POL 909.00/XXX
POL 96U.00/XXX, POL 96E.00/XXX
POL 98U.00/XXX, POL 98E.00/XXX

Climatix™

Instructions for use of the connection terminals

Vorschrift für die Verwendung der Anschlussklemmen

Climatix 6XX controllers with inbuilt HMI
Climatix 6XX-Regler mit eingebautem HMI



Communication modules and Climatix extensions
Kommunikationsmodule und Climatix-Erweiterungen



Electrical connections to the Climatix 6XX controllers are only permitted via components supplied by Phoenix. The optional connectors listed below are available on request.

Elektrische Verbindungen zum Climatix 6XX-Regler dürfen nur durch Komponenten der Firma Phoenix hergestellt werden. Die erlaubten Stecker sind nachfolgend aufgeführt und müssen von Firma Phoenix bezogen werden.

Link: www.phoenixcontact.com

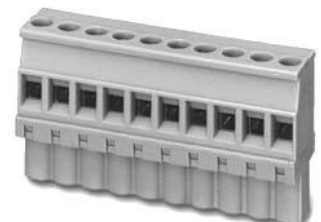
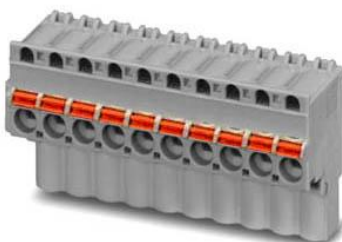
Example of connectors / Beispiele Anschlussklemmen

Phoenix connectors / Phoenix Anschlussklemmen

FKCVW

KCT

MVSTBW



Phoenix connectors / Phoenix Anschlussklemmen

Controllers / Regler (POL 68X.XX/XXX / POL 63X.XX/XXX)

Poles Polzahl	Spring cage, cable side entry	Spring cage, cable top entry	Srews, cable side entry	Recommended color	Required POL 68X	Required POL 63X
2	FKCVW 2,5/2-ST	FKCT 2,5/2-ST	MVSTBW 2,5/2-ST	Orange	1	1
2	FKCVW 2,5/2-ST	FKCT 2,5/2-ST	MVSTBW 2,5/2-ST	Grey	1	2
3	FKCVW 2,5/3-ST	FKCT 2,5/3-ST	MVSTBW 2,5/3-ST	Grey	6	2
4	FKCVW 2,5/4-ST	FKCT 2,5/4-ST	MVSTBW 2,5/4-ST	Grey	-	1
5	FKCVW 2,5/5-ST	FKCT 2,5/5-ST	MVSTBW 2,5/5-ST	Grey	1	-
6	FKCVW 2,5/6-ST	FKCT 2,5/6-ST	MVSTBW 2,5/6-ST	Grey	1	1
7	FKCVW 2,5/7-ST	FKCT 2,5/7-ST	MVSTBW 2,5/7-ST	Grey	2	-
8	FKCVW 2,5/8-ST	FKCT 2,5/8-ST	MVSTBW 2,5/8-ST	Grey	2	3

Extension module 6 I/Os, 8 I/Os (POL925.00XXX // POL945.00/XXX)

Poles Polzahl	Spring cage, cable side entry	Spring cage, cable top entry	Srews, cable side entry	Recommended color	Required POL 925	Required POL 945
3	FKCVW 2,5/3-ST	FKCT 2,5/3-ST	MVSTBW 2,5/3-ST	Grey	1	2
6	FKCVW 2,5/6-ST	FKCT 2,5/6-ST	MVSTBW 2,5/6-ST	Grey	1	
7	FKCVW 2,5/7-ST	FKCT 2,5/7-ST	MVSTBW 2,5/7-ST	Grey		1

Extension module 14 I/Os, 15 I/Os, 26 I/Os (POL955.00/XXX // POL965.00/XXX // POL985.00/XXX)

Poles Polzahl	Spring cage, cable side entry	Spring cage, cable top entry	Srews, cable side entry	Recom. color	Required POL 955	Required POL 965	Required POL 985
2	FKCVW 2,5/2-ST	FKCT 2,5/2-ST	MVSTBW 2,5/2-ST	Grey	1	1	
3	FKCVW 2,5/3-ST	FKCT 2,5/3-ST	MVSTBW 2,5/3-ST	Grey	1	1	2
5	FKCVW 2,5/5-ST	FKCT 2,5/5-ST	MVSTBW 2,5/5-ST	Grey			2
6	FKCVW 2,5/6-ST	FKCT 2,5/6-ST	MVSTBW 2,5/6-ST	Grey	3		1
7	FKCVW 2,5/7-ST	FKCT 2,5/7-ST	MVSTBW 2,5/7-ST	Grey		1	1
8	FKCVW 2,5/8-ST	FKCT 2,5/8-ST	MVSTBW 2,5/8-ST	Grey		2	2

ECV extension module (POL94E.00XXX // POL94U.00/XXX)

Poles Polzahl	Spring cage, cable side entry	Spring cage, cable top entry	Srews, cable side entry	Recommended color	Required POL 994E	Required POL 994U
2	FKCVW 2,5/2-ST	FKCT 2,5/2-ST	MVSTBW 2,5/2-ST	Grey	1	1
3	FKCVW 2,5/3-ST	FKCT 2,5/3-ST	MVSTBW 2,5/3-ST	Grey	1	1
4	FKCVW 2,5/4-ST	FKCT 2,5/4-ST	MVSTBW 2,5/4-ST	Grey	1	1
7	FKCVW 2,5/7-ST	FKCT 2,5/7-ST	MVSTBW 2,5/7-ST	Grey	1	1

ECV2 extension module (POL96U/E.00/XXX // POL98U/E.00/XXX)

Poles Polzahl	Spring cage, cable side entry	Spring cage, cable top entry	Srews, cable side entry	Recom. color	Required POL 96U/E	Required POL 98U/E
2	FKCVW 2,5/2-ST	FKCT 2,5/2-ST	MVSTBW 2,5/2-ST	Grey	1	
3	FKCVW 2,5/3-ST	FKCT 2,5/3-ST	MVSTBW 2,5/3-ST	Grey	1	2
5	FKCVW 2,5/5-ST	FKCT 2,5/5-ST	MVSTBW 2,5/5-ST	Grey	2	4
6	FKCVW 2,5/6-ST	FKCT 2,5/6-ST	MVSTBW 2,5/6-ST			1
7	FKCVW 2,5/7-ST	FKCT 2,5/7-ST	MVSTBW 2,5/7-ST	Grey	1	1
8	FKCVW 2,5/8-ST	FKCT 2,5/8-ST	MVSTBW 2,5/8-ST	Grey	3	3

LON communication module (POL906.00/XXX// POL907.00/XXX)

Poles Polzahl	Spring cage, cable side entry	Spring cage, cable top entry	Srews, cable side entry	Recom. color	Required per module
2	FKCVW 2,5/2-ST	FKCT 2,5/2-ST	MVSTBW 2,5/2-ST	Grey	1



BACnet/MSTP communication module (POL904.00/XXX// POL909.00/XXX)

Poles Polzahl	Spring cage, cable side entry	Spring cage, cable top entry	Srews, cable side entry	Recom. color	Required per module
3	FKCVW 2,5/3-ST	FKCT 2,5/3-ST	MVSTBW 2,5/3-ST	Grey	1

Modbus communication module (POL902.00/XXX)

Poles Polzahl	Spring cage, cable side entry	Spring cage, cable top entry	Srews, cable side entry	Recom. color	Required per module
3	FKCVW 2,5/3-ST	FKCT 2,5/3-ST	MVSTBW 2,5/3-ST	Grey	2

Connectors for peripheral bus and communication interfaces

	Peripheral bus	Board-to-board (not included), Phoenix Board-to-wire (not included), Phoenix Note: Included with all connector sets for extension modules	ZEC1,0/4-LPV-3,5 GY35AUC2C11 ZEC1,0/4-ST-3,5 GY35AUC1R1,4
	COMM interface	Board-to-board (not included), Phoenix Note: Included with all communication module products	ZEC1,0/10-LPV-3,5 GY35AUC2C11